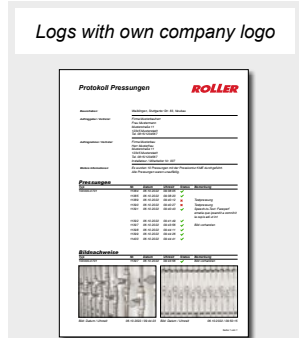
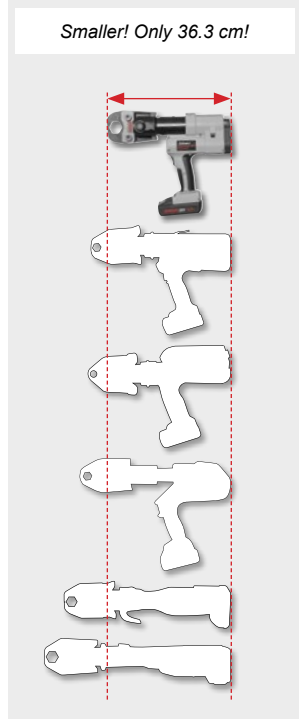


ROLLER'S

Multi-Press 22V Connected



Universal, handy, robust 32 kN hybrid radial press for cordless and mains operation. With Connected functionality by Wi-Fi radio standard. With selectable ACC drive mode. Logging of measuring/pressing data. OLED display. Pressure monitoring and results display in the OLED display. Anti-vibration system. For radial pressing joints Ø 10–108 (110) mm, Ø ¼–4". Li-Ion 22V Technology! Li-Ion 21.6 V, 2.5 Ah battery for approx. 210 pressings per battery charge*.

- Universal for all ROLLER'S pressing tongs (except ROLLER'S pressing tongs Mini) and ROLLER'S pressing rings, as well as for suitable pressing tongs / pressing rings of other makes.
- Compact, handy, extra light. Drive unit with battery pack weighs only 3.3 kg.
- Optimum weight distribution for one-hand operation. Drive unit with inserted pressing tongs can be put down on the battery ready to pick up.
- Ergonomically designed housing with carrying eye for shoulder strap as well as soft grip handles.
- Drive unit with pressing tongs V15 only 36.3 cm long. Can therefore be used anywhere, free hand, over head, in confined spaces.
- Swivelable pressing tongs (through 360°) by housing on rotary bearing. Secure seating of pressing tongs / adaptor tongs by automatic locking. Electrical monitoring of the closed position of the tong retaining bolt.
- **Wi-Fi connection to the Cloud**
After registration and connection to the Internet, data collected by ROLLER'S Multi-Press 22V Connected (see Connected functionality for details) are sent to the Cloud. The user can access these data through the ROLLER Service Portal and make various settings on the drive unit.
- **Connected functionality**
Many different functions are available, for example
 - Logging of measuring/pressing data as well as creation of logs with your own company logo
 - Display of error messages
 - Configuration of the product (language, date, time, time zone, pressure unit, LED lighting time and LED brightness, standby time, ACC drive mode, information signal tones, etc.)
 - Set-up of usage bars (immediate bar or feedback interval as anti-theft and others)
 - Geolocalisation of the press sites
 - Conversion of voice recordings into editable text
 - Uploading, storage and transfer to logs of pictures of pressings
 - Display of notices (annual inspection and periodic inspection, new firmware version, battery status, etc.)
- **Pressure monitoring and results display in the OLED display**
Electronic pressure sensor for thrust force monitoring. Monitoring and display of pressure and maximum pressure during the pressing process. Pressure analysis after the pressing process with result display in the OLED display and with coloured LEDs. Display of the pressure-time diagram of the performed pressing directly in the OLED display. Storage of the measured/pressing data.
- **Selectable ACC drive mode**
With the ACC drive mode switched on, the drive unit automatically ends the pressing process, emits an acoustic signal and returns automatically (automatic circuit control). With the ACC drive mode switched off, the drive unit stops briefly before reaching the necessary pressure, the full closing of the pressing tongs, pressing ring or pressing segments is easily visible. The pressing process is continued by pressing the safety switch again. The drive unit ends the pressing process automatically, emits an acoustic signal and returns (automatic circuit control).
- **Voice recordings**
A voice recording can be made and stored for every pressing with the integrated microphone of the drive unit. These can be converted into editable text by voice recognition and transferred to logs in the Service Portal.
- **Anti-vibration system**
Special drive technology with weight compensation and soft grip handles, for low-vibration, fatigue-free pressing.
- Several tons feed and pressing force for perfect, split-second pressing. Thrust 32 kN. Robust, powerful, electrohydraulic drive with eccentric piston pump with robust planetary gear and compact high-performance hydraulic system. Constant shear force for constantly reliable pressing.
- Brushless, maintenance-free, powerful battery motor 21.6 V, 400 W output, safety switch.
- Integrated LED work lights arranged in two rows, lighting time and brightness adjustable in steps, for optimum illumination of the work place.
- **Li-Ion 22 V Technology**
Highly resistant Li-Ion 21.6 V batteries with 2.5, 5.0 or 9.0 Ah capacity, for long service life. Powerful and light. Li-Ion 21.6 V, 2.5 Ah for approx. 210 pressings, 5.0 Ah for approx. 420 pressings, 9.0 Ah for approx. 750 pressings Viega Profipress DN 15 per battery charge*. Graduated charging status indicator by coloured LEDs. Operating temperature range – 10 to +60 °C. No memory effect for maximum battery power. 100–240 V, 50–60 Hz, 90 W rapid charger or 100–240 V, 50–60 Hz, 290 W rapid charger, for shorter charging times (accessories).
- **For cordless and mains operation**
220–240 V/21.6 V, 50–60 Hz, 15 A (output), power supply for mains operation instead of Li-Ion 21.6 V battery (accessory).

ROLLER'S Multi-Press 22V ACC

Scope of Delivery

Art.-No.

€

ROLLER'S Multi-Press 22V ACC Basic-Pack

21.6 V, 32 kN drive unit, with automatic circuit control, pressure monitoring and result display, Li-Ion 21.6 V, 2.5 Ah battery, 100–240 V, 90 W rapid charger.

Basic-Pack in steel case	576010 A220	2.117,52
Basic-Pack in L-Boxx system case	576011 A220	2.159,04

Accessories

ROLLER'S pressing tongs / pressing rings	See page 100–140	
Adaptor tongs for ROLLER'S pressing rings	See page 140	
ROLLER'S Multi-Press 22V ACC drive unit, without battery	576000 A22	1.546,62
Li-Ion 21.6 V, 2.5 Ah battery	571571 A22	258,46
Li-Ion 21.6 V, 5.0 Ah battery	571581 A22	310,36
Li-Ion 21.6 V, 9.0 Ah battery	571583 A22	414,16
100–240 V, 50–60 Hz, 90 W rapid charger	571585 A220	175,42
100–240 V, 50–60 Hz, 290 W rapid charger	571587 A220	414,16
220–240 V/21.6 V, 50–60 Hz, 15 A power supply, for mains operation instead of Li-Ion 21.6 V battery	571567 A220	414,16
ROLLER'S cropping tongs M for threaded bars	See page 142	
ROLLER'S cable shears for electric cables	See page 142	
Steel case with inlay	571290 A	110,03
L-Boxx system case with inlay	576345 A	146,36
ROLLER'S Worklight 2800 22V cordless LED flood light	see page 173	



ROLLER'S Multi-Press 22 V ACC

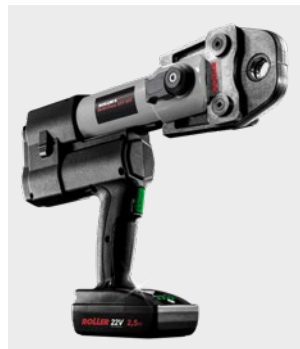
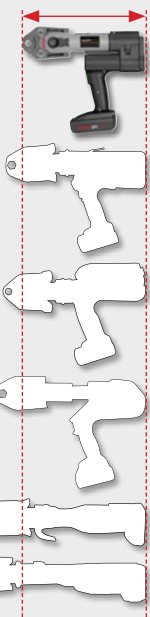
Two connections for ROLLER'S manual radial press and ROLLER'S 32 kN radial presses



German Top Quality



Smaller!
Only 35.5 cm!



Cropping of threaded bars with ROLLER'S cropping tongs M



Cutting electric cables with ROLLER'S cable shears



Universal, handy, robust hybrid radial press 32 kN for cordless and mains operation, with automatic circuit control, pressure monitoring and result display. Anti-vibration system. For radial pressing joints $\varnothing 10-108$ (110) mm, $\varnothing \frac{1}{4}-4$ ". Li-Ion 22 V Technology! Li-Ion 21.6 V, 2.5 Ah battery for approx. 200 pressings per battery charge.

- Universal for all ROLLER'S pressing tongs (except ROLLER'S pressing tongs Mini) and ROLLER'S pressing rings, as well as for suitable pressing tongs / pressing rings of other makes.
- Compact, handy, extra light. Drive unit with battery pack weighs only 3.3 kg.
- Optimum weight distribution for one-hand operation. Drive unit with inserted pressing tongs can be put down on the battery ready to pick up.
- Ergonomically designed housing with soft grip handles.
- Drive unit with pressing tongs V15 only 35.5 cm long. Can therefore be used anywhere, free hand, over head, in confined spaces.
- Tiltable pressing tongs (through 360°) by housing on rotary bearing.
- Pressing process in inching mode with ACC – for work safety, functional safety and operating safety. Automatic return (forced return) after completed pressing.
- **Pressure monitoring and result display**
Electronic pressure sensor for thrust force monitoring. Pressure evaluation after the pressing process. Result display with 2-coloured white/red LED.
- **Anti-vibration system**
Special drive technology with weight compensation and soft grip handles, for low-vibration, fatigue-free pressing.
- Several tons feed and pressing force for perfect, split-second pressing. Thrust 32 kN. Robust, powerful, electrohydraulic drive with eccentric piston pump with robust planetary gear and compact high-performance hydraulic system. Constant shear force for constantly reliable pressing.
- Proven, powerful battery motor 21.6 V, 380 W output, safety switch.
- Integrated LED work light for illuminating the work place.
- **Li-Ion 22 V Technology**
Highly resistant Li-Ion 21.6 V batteries with 2.5, 5.0 or 9.0 Ah capacity, for long service life. Powerful and light. Li-Ion 21.6 V, 2.5 Ah for approx. 200 pressings, 5.0 Ah for approx. 400 pressings, 9.0 Ah for approx. 720 pressings Viega Profipress DN 15 per battery charge*. Graduated charging status indicator by coloured LEDs. Operating temperature range -10 to +60 °C. No memory effect for maximum battery power. 100-240 V, 50-60 Hz, 90 W rapid charger or 100-240 V, 50-60 Hz, 290 W rapid charger, for shorter charging times (accessories).
- **For cordless and mains operation**
220-240 V/21.6 V, 50-60 Hz, 15 A (output), power supply for mains operation instead of Li-Ion 21.6 V battery (accessory).
- Secure seating of pressing tongs / adaptor tongs by automatic locking.
- **Complete range of ROLLER'S pressing tongs / pressing rings**
for all common pressfitting systems, see page 100-140.
With precisely worked and exactly rounded, system-specific press contour according to the respective pressfitting system. For perfect system-conformant, reliable pressing.
The pressing tongs / pressing rings are made from tenacious, specially hardened special steel and they are therefore highly resistant. For maximum quality demands and long life.
ROLLER'S pressing tongs/pressing rings fit all ROLLER'S 32 kN radial presses and suitable drive units of other makes with 32 kN thrust.
All pressing tongs marked by a * have an additional connection for manual driving by the ROLLER'S Easy-Press drive unit.
All pressing rings S (PR-2B) marked with ** can also be driven with the manual radial press ROLLER'S Easy-Press using the adapter tong Z8, see page 140.
- Confirmations of suitability see page 52.
- Liability acceptance agreements see page 53.

ROLLER'S

Multi-Press 14V ACC

Two connections for ROLLER'S manual radial press and ROLLER'S 32 kN radial presses



German Top Quality



Robust, compact hybrid radial press 32 kN for cordless and mains operation, with automatic return (forced return). For radial press joints Ø 10–108 (110) mm, Ø ¼–4". Li-Ion 14.4 V, 5.0 Ah battery for approx. 450 pressings per battery charge*.

- Universal for all ROLLER'S pressing tongues (except ROLLER'S pressing tongues Mini) and ROLLER'S pressing rings, as well as for suitable pressing tongues / pressing rings of other makes.
- Compact design, perfect weight distribution for real one-hand operation, comfortable weight, drive unit with battery only 4.3 kg.
- Tiltable pressing tongues (through 360°) by housing on rotary bearing.
- Pressing process in inching mode with ACC – for work safety, functional safety and operating safety. Automatic return (forced return) after completed pressing.
- Several tons feed and pressing force for perfect, split-second pressing. Thrust 32 kN. Robust, powerful, electrohydraulic drive with eccentric piston pump with robust planetary gear and compact high-performance hydraulic system.
- Proven, powerful battery motor 14.4 V, 380 W output, safety switch.
- Integrated LED work light for illuminating the work place.
- Constant shear force for constantly reliable pressing.
- **Li-Ion PLUS technology**
Highly resistant Li-Ion 14.4 V battery with 5.0 Ah capacity, for long service life. Powerful and light. Li-Ion 14.4 V, 5.0 Ah battery for approx. 450 pressings Viega Profipress DN 15 per battery charge*. Total discharge and overload protection with single cell monitoring. Temperature monitoring during the charging process. Operating temperature range – 10 to + 60 °C. No memory effect for maximum battery power. 220–240 V, 50–60 Hz, 10.8–18 V, 65 W rapid charger, for short charging times.
- **For cordless and mains operation**
220–240 V/14.4 V, 33 A (output), power supply for mains operation instead of Li-Ion 14.4 V battery (accessory).
- Secure seating of pressing tongues / adaptor tongues by automatic locking.
- **Complete range of ROLLER'S pressing tongues / pressing rings** for all common pressfitting systems, see page 100–140.
With precisely worked and exactly rounded, system-specific press contour according to the respective pressfitting system. For perfect system-conformant, reliable pressing.
The pressing tongues / pressing rings are made from tenacious, specially hardened special steel and they are therefore highly resistant. For maximum quality demands and long life.
ROLLER'S pressing tongues/pressing rings fit all ROLLER'S 32 kN radial presses and suitable drive units of other makes with 32 kN thrust.
All pressing tongues marked by a * have an additional connection for manual driving by the ROLLER'S Easy-Press drive unit.
All pressing rings S (PR-2B) marked with ** can also be driven with the manual radial press ROLLER'S Easy-Press using the adapter tong Z8, see page 140.
- Confirmations of suitability see page 52.
- Liability acceptance agreements see page 53.

Scope of Delivery Art.-No. €

ROLLER'S Multi-Press 14V ACC Basic-Pack

14.4 V, 32 kN drive unit, with automatic circuit control, Li-Ion 14.4 V, 5.0 Ah battery, 220–240 V, 10.8–18 V, 65 W rapid charger.

Basic-Pack in steel case	571014 A220	1.702,32
Basic-Pack in L-Boxx system case	571019 A220	1.743,84

Accessories

ROLLER'S pressing tongues / pressing rings	See page 100–140	
Adaptor tongues for ROLLER'S pressing rings	See page 140	
ROLLER'S Multi-Press 14V ACC drive unit, without battery	571004 A14	1.266,36
Li-Ion 14.4 V, 5.0 Ah battery	571555 A14	227,32
220–230 V, 50–60 Hz, 10.8–18 V, 65 W rapid charger	571560 A220	154,66
Li-Ion 220–240 V/14.4 V, 50–60 Hz, 33 A power supply, for mains operation instead of Li-Ion 14.4 V battery	571565 A220	351,88
ROLLER'S cropping tongs M for threaded bars	See page 142	
ROLLER'S cable shears for electric cables	See page 142	
Steel case with inlay	571290 A	110,03
L-Boxx system case with inlay	571283 A	146,36

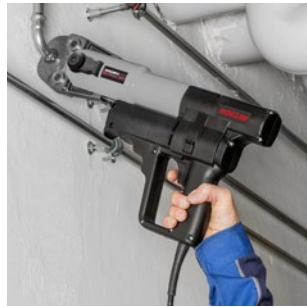
*Ambient temperature approx. 20°C.

Recommended price. All prices plus VAT

ROLLER'S *Uni-Press ACC*



German Top Quality



Robust, compact electric radial press 32 kN with automatic return (forced return). For radial press joints Ø 10–108 (110) mm, Ø 3/8–4"

- Universal for all ROLLER'S pressing tongs (except ROLLER'S pressing tongs Mini) and ROLLER'S pressing rings, as well as for suitable pressing tongs / pressing rings of other makes.
- Compact design, perfect weight distribution for real one-hand operation, comfortable weight, drive unit only 4.7 kg.
- Tiltable pressing tongs (through 360°) by housing on rotary bearing.
- Pressing process in inching mode with ACC – for work safety, functional safety and operating safety. Automatic return (forced return) after completed pressing.
- Several tons feed and pressing force for perfect, split-second pressing. Thrust 32 kN. Robust, powerful, electrohydraulic drive with eccentric piston pump with robust planetary gear and compact high-performance hydraulic system.
- Proven, powerful 1~ universal motor 230 V, 50–60 Hz, 450 W, with safety switch.
- Constant shear force for constantly reliable pressing.
- Secure seating of pressing tongs / adaptor tongs by automatic locking.
- **Complete range of ROLLER'S pressing tongs / pressing rings for all common pressfitting systems, see page 100–140.**

With precisely worked and exactly rounded, system-specific press contour according to the respective pressfitting system. For perfect system-conformant, reliable pressing.

The pressing tongs / pressing rings are made from tenacious, specially hardened special steel and they are therefore highly resistant. For maximum quality demands and long life.

ROLLER'S pressing tongs/pressing rings fit all ROLLER'S 32 kN radial presses and suitable drive units of other makes with 32 kN thrust.

All pressing tongs marked by a * have an additional connection for manual driving by the ROLLER'S Easy-Press drive unit.

All pressing rings S (PR-2B) marked with ** can also be driven with the manual radial press ROLLER'S Easy-Press using the adaptor tong Z8, see page 140.

- Confirmations of suitability see page 52.
- Liability acceptance agreements see page 53.

Scope of Delivery	Art.-No.	€
-------------------	----------	---

ROLLER'S *Uni-Press ACC Basic-Pack*

32 kN drive unit with forced return.

Basic-Pack in steel case	577010 A220	1.462,54
Basic-Pack in L-Boxx system case	577013 A220	1.504,06

Accessories

ROLLER'S pressing tongs / pressing rings	See page 100–140	
Adaptor tongs for ROLLER'S pressing rings	See page 140	
ROLLER'S Uni-Press ACC drive unit with forced return	577000 A220	1.358,74
ROLLER'S cropping tongs M for threaded bars	See page 142	
ROLLER'S cable shears for electric cables	See page 142	
Steel case with inlay	570280 A	110,03
L-Boxx system case with inlay	571283 A	146,36

ROLLER'S Uni-Press SE



Two connections for ROLLER'S manual radial press and ROLLER'S 32 kN radial presses

German Top Quality



Robust, compact electric radial press 32 kN for radial press joints Ø 10–108 (110) mm, Ø ¼–4".

- Universal for all ROLLER'S pressing tongs (except ROLLER'S pressing tongs Mini) and ROLLER'S pressing rings, as well as for suitable pressing tongs / pressing rings of other makes.
- Compact, slim form, comfortable weight, drive unit only 4.7 kg.
- Pressing process in inching mode – for work safety, functional safety and operating safety. Perfect pressing is established by complete closing of the pressing tongs. The pressing tongs stay closed until switching over to return. Perfect visual inspection of proper pressing is therefore possible.
- Several tons feed and pressing force for perfect, split-second pressing. Thrust 32 kN. Robust, powerful, electromechanical drive with maintenance-free gear with safety slip clutch and feed system with trapezoidal gear spindle.
- Proven, powerful 1~ universal motor 230 V, 50–60 Hz, 450 W, right and left-hand rotation, safety switch. Overload protection.
- Constant shear force for constantly reliable pressing.
- Secure seating of pressing tongs / adaptor tongs by automatic locking
- **Complete range of ROLLER'S pressing tongs / pressing rings** for all common pressfitting systems, see page 100–140.
With precisely worked and exactly rounded, system-specific press contour according to the respective pressfitting system. For perfect system-conformant, reliable pressing.
The pressing tongs / pressing rings are made from tenacious, specially hardened special steel and they are therefore highly resistant. For maximum quality demands and long life.
ROLLER'S pressing tongs/pressing rings fit all ROLLER'S 32 kN radial presses and suitable drive units of other makes with 32 kN thrust.
All pressing tongs marked by a * have an additional connection for manual driving by the ROLLER'S Easy-Press drive unit.
All pressing rings S (PR-2B) marked with ** can also be driven with the manual radial press ROLLER'S Easy-Press using the adapter tong Z8, see page 140.
- Confirmations of suitability see page 52.
- Liability acceptance agreements see page 53.

Scope of Delivery	Art.-No.	€
-------------------	----------	---

ROLLER'S Uni-Press SE Basic-Pack		
32 kN drive unit, in steel case	572111 A220	964,30

Accessories

ROLLER'S pressing tongs / pressing rings	See page 100–140	
Adaptor tongs for ROLLER'S pressing rings	See page 140	
ROLLER'S Uni-Press SE drive unit	572101 A220	912,40
ROLLER'S cropping tongs M for threaded bars	See page 142	
ROLLER'S cable shears for electric cables	See page 142	
Steel case with inlay	570280 A	110,03



ROLLER'S *Easy-Press*



German Top Quality



Universal manual radial press for radial press joints of plastic and composite tubes Ø 10–26 mm.

- For ROLLER'S pressing tongs / pressing rings (except ROLLER'S pressing tongs Mini).
- Robust, compact, universal drive unit with dividable, bolted pipe arms for selectable lever length, therefore optimum force transmission.
- Simple, easy work, due to dividable pipe arms even in confined spaces.
- Perfect pressing is established by complete closing of the pressing tongs. Locking end stop, the pressing tongs stay closed until opening. Perfect visual inspection of proper pressing is therefore possible.

- **Complete range of ROLLER'S pressing tongs / pressing rings** for all common pressfitting systems, see page 100–140.

With precisely worked and exactly rounded, system-specific press contour according to the respective pressfitting system. For perfect system-conformant, reliable pressing.

The pressing tongs / pressing rings are made from tenacious, specially hardened special steel and they are therefore highly resistant. For maximum quality demands and long life.

ROLLER'S pressing tongs / pressing rings fit all ROLLER'S 32 kN radial presses and suitable drive units of other makes with 32 kN thrust.

All pressing tongs marked by a * have an additional connection for manual driving by the ROLLER'S Easy-Press drive unit.

All pressing rings S (PR-2B) marked with ** can also be driven with the manual radial press ROLLER'S Easy-Press using the adapter tong Z8, see page 140.

- Confirmations of suitability see page 52.
- Liability acceptance agreements see page 53.

Scope of Delivery	Art.-No.	€
ROLLER'S Easy-Press drive unit	574000 A	227,32

Choose your own pressing tongs, see page 100–140.

All pressing tongs marked with * and all pressing rings S marked with ** also fit into the ROLLER'S Easy-Press drive unit.

Accessories

ROLLER'S pressing tongs / pressing rings	See page 100–140	
Adaptor tongs Z8 for driving ROLLER'S pressing rings S (PR-2B)	574702 R	144,28
Carrying bag for drive unit and for 3 pressing tongs	574436 R	38,41
ROLLER'S cropping tongs M for threaded bars	See page 142	
Steel case with inlay	574430 A	96,53

System	Pressing tongs Mini/pressing rings	Drive with adapter tongs	Art.-No.	€
WEM	U 16		578374	165,66
WIELAND-WERKE cuprotherm CTX	TH 14		578348	177,08
	TH 16		578352 R	177,08
	TH 14 S (PR-2B)**	Mini Z8	574778 R	124,51
	TH 16 S (PR-2B)**	Mini Z8	574782 R	124,51
WKS-Press	TH 14		578348	177,08
	TH 16		578352 R	177,08
	TH 17		578354	177,08
	TH 20		578358 R	177,08
	TH 26		578362 R	177,08
	TH 32		578364	177,08
	TH 40		578624	234,69
	WÜRTH Würth	TH 16		578352 R
TH 20		578358 R	177,08	
TH 26		578362 R	177,08	
HE 32		578370 R	212,06	

X

XtraConnect	F 16		578456	168,68
	F 20		578460	168,68
	F 26		578462	182,48
	F 32		578464	182,48
	F 16 S (PR-2B)**	Mini Z8	574728 R	124,51
	F 20 S (PR-2B)**	Mini Z8	574730 R	124,51
	F 26 S (PR-2B)**	Mini Z8	574732 R	124,51
	F 32 S (PR-2B)	Mini Z8	574734 R	136,96
	H 16		578400	159,75
	H 20		578406	159,75
	H 26		578410	159,75
	H 32		578412	159,75
	TH 16		578352 R	177,08
	TH 20		578358 R	177,08
	TH 26		578362 R	177,08
	TH 32		578364	177,08
	TH 16 S (PR-2B)**	Mini Z8	574782 R	124,51
	TH 20 S (PR-2B)**	Mini Z8	574788 R	124,51
	TH 26 S (PR-2B)**	Mini Z8	574794 R	124,51
	TH 32 S (PR-2B)	Mini Z8	574798 R	136,96
	U 16		578374	165,66
	U 20		578378	165,66
	(DN 26) U 25		578380	165,66
	U 32		578382	194,31
	VP 16		578482	176,56
	VP 20		578484	176,56
	VP 32		578488	195,25

Y

YX COPPER	Yz 16 UNI	578740	184,45
UNIPEX Water & Gas (AUS)	Yz 20 UNI	578742	184,45
	Yz 25 UNI	578744	184,45
	Yz 32 UNI	578746	184,45

System	Pressing tongs Mini/pressing rings	Drive with adapter tongs	Art.-No.	€
Z				
ZEWOTHERM Zewo Press Premium	TH 12		578346	177,08
	TH 16		578352 R	177,08
	TH 17		578354	177,08
	TH 18		578356	177,08
	TH 20		578358 R	177,08
	TH 26		578362 R	177,08
	TH 32		578364	177,08
	TH 40		578624	234,69
	TH 12 S (PR-2B)**	Mini Z8	574776 R	124,51
	TH 16 S (PR-2B)**		574782 R	124,51
	TH 17 S (PR-2B)**	Mini Z8	574784 R	124,51
	TH 18 S (PR-2B)**	Mini Z8	574786 R	124,51
	TH 20 S (PR-2B)**		574788 R	124,51
	TH 26 S (PR-2B)**		574794 R	124,51
TH 32 S (PR-2B)		574798 R	136,96	
ZEWOTHERM Zewo Press PPSU	TH 16		578352 R	177,08
	TH 20		578358 R	177,08
	TH 26		578362 R	177,08
	TH 32		578364	177,08
	TH 16 S (PR-2B)**	Mini Z8	574782 R	124,51
	TH 20 S (PR-2B)**	Mini Z8	574788 R	124,51
	TH 26 S (PR-2B)**	Mini Z8	574794 R	124,51
ZURN INDUSTRIES ZURN PEX	US ¾"		578534	201,16
	US ½"		578536	201,16
	US ¾"		578538	201,16
	US 1"		578540	201,16

Pressfitting systems for gas installations may only be pressed with the pressing tongs Mini which are highlighted in yellow in the table.

Observe the national regulations. Read and observe the system provider's/manufacture's instructions for use and assembly instructions.

** Can also be driven by the ROLLER'S Easy-Press manual radial press using the Z8 adapter tongs, see page 90. Observe the national regulations.

¹⁾ Only pressing tongs from designation "108" (1st quarter of 2008), "208" (2nd quarter of 2008) etc. can be used. The designation is stamped on every pressing jaw.

²⁾ For accommodating suitable pressing inserts.

³⁾ Only pressing tongs from designation "117" (1st quarter of 201), "217" (2nd quarter of 2017) etc. can be used. The designation is stamped on every pressing jaw.

⁴⁾ For pipes with the EN technical standard. Observe the system provider's/manufacture's instructions for use.

⁶⁾ Only use Mini pressing tongs identified by "VMP ½" G" on the pressing jaws for gas installations.

⁷⁾ Previous designation: Mini C 26 pressing tongs

⁸⁾ For pipes with the ASTM technical standard. Observe the system provider's/manufacture's instructions for use.

Suitability of the ROLLER'S pressing tools for pressfitting systems: Status 27.10.2023. The current status can be found on the Internet:

www.albert-roller.de → Downloads → Product Catalogues, Brochures → ROLLER Catalogue.

See page 79 for adapter tongs. Pressing tongs/pressing rings for other press fitting systems on request.



Accessories	Art.-No.	€
Adaptor tongs Mini Z8 for driving the ROLLER'S pressing rings S (PR-2B)	574700 R	144,28
Steel case with inlay for 8 pressing tongs Mini / cropping tongs Mini and shelf for pipe cutter up to Ø 42 mm	578295 A	96,53
Steel case with inlay for Mini Z8 adapter tongs and Z8 adapter tongs as well as 6 ROLLER'S pressing rings S (PR-2B)	574516 A	96,53
L-Boxx system case with inlay for 11 pressing tongs Mini / cropping tongs Mini and 6 pressing rings S (PR-2B)	578659 A	146,36
L-Boxx system case with inlay for Mini Z8 adapter tongs and Z8 adapter tongs as well as 14 ROLLER'S pressing rings S (PR-2B)	574704 A	146,36

ROLLER'S pressing tongs Mini / pressing rings

Accessory for ROLLER'S 22kN radial presses

System	Pressing tongs Mini/pressing rings	Drive with adapter tongs	Art.-No.	€	
Viega	V 12		578324	146,98	
	Profipress Therm	V 15		578328	146,98
		V 18		578332	146,98
	V 22		578334	146,98	
	V 12 S (PR-2B)	Mini Z8	574748 R	124,51	
	V 15 S (PR-2B)	Mini Z8	574752 R	124,51	
	V 18 S (PR-2B)	Mini Z8	574756 R	124,51	
Viega ProPress (ASTM) ⁹	V 22 S (PR-2B)	Mini Z8	574758 R	124,51	
	VUS ½" (OD 15,9 mm)		578566	177,50	
	VUS ¾" (OD 22,2 mm)		578568	177,50	
	VUS 1" (OD 28,6 mm)		578570	177,50	
	VUS 1½" (OD 34,9 mm)		578606	177,50	
	VUS ½" S (PR-2B) (OD 15,9 mm)	Mini Z8	574764 R	124,51	
	VUS ¾" S (PR-2B) (OD 22,2 mm)	Mini Z8	574766 R	124,51	
Viega ProPress 304 FKM (ASTM) ⁹	VUS 1" S (PR-2B) (OD 28,6 mm)	Mini Z8	574768 R	124,51	
	VUS 1½" S (PR-2B) (OD 34,9 mm)	Mini Z8	574770 R	124,51	
	VUS ½" (OD 15,9 mm)		578566	177,50	
	VUS ¾" (OD 22,2 mm)		578568	177,50	
	VUS 1" (OD 28,6 mm)		578570	177,50	
	VUS 1½" (OD 34,9 mm)		578606	177,50	
	Viega ProPress 316 (ASTM) ⁹	VUS ½" (OD 15,9 mm)		578566	177,50
VUS ¾" (OD 22,2 mm)			578568	177,50	
VUS 1" (OD 28,6 mm)			578570	177,50	
VUS 1½" (OD 34,9 mm)			578606	177,50	
Viega Propress WATER System AUS		VAU 15 (OD 12,7 mm)		578630	151,86
		VAU 20 (OD 19,1 mm)		578632	151,86
		VAU 25 (OD 25,4 mm)		578634	151,86
	VAU 32 (OD 31,8 mm)		578636	159,75	
	VAU 15 S (PR-2B) (OD 12,7 mm)	Mini Z8	574804 R	124,51	
	VAU 20 S (PR-2B)** (OD 19,1 mm)	Mini Z8	574806 R	124,51	
	VAU 25 S (PR-2B)** (OD 25,4 mm)	Mini Z8	574808 R	136,96	
Viega PropressG GAS System AUS	VAU 32 S (PR-2B) (OD 31,8 mm)	Mini Z8	574856 R	136,96	
	VAU 15 (OD 12,7 mm)		578630	151,86	
	VAU 20 (OD 19,1 mm)		578632	151,86	
	VAU 25 (OD 25,4 mm)		578634	151,86	
	VAU 32 (OD 31,8 mm)		578636	159,75	
	Viega Raxinox	VRX 16		578640	186,42
		VRX 20		578642	186,42
Viega Raxofix		VRX 16		578640	186,42
	VRX 20		578642	186,42	
	VRX 25		578644	204,17	
	VRX 32		578646	204,17	
Viega Sanfix	VP 16/17		578482	176,56	
	VP 20		578484	176,56	
	VP 25		578486	176,56	
	VP 32		578488	195,25	
Viega Sanfix Fosta	VP 16/17		578482	176,56	
	VP 20		578484	176,56	
	VP 25		578486	176,56	
	VP 32		578488	195,25	
Viega Sanpress	V 12		578324	146,98	
	V 15		578328	146,98	
	V 18		578332	146,98	
	V 22		578334	146,98	
	V 28		578336	146,98	
	V 35		578604	178,12	
	V 12 S (PR-2B)	Mini Z8	574748 R	124,51	
	V 15 S (PR-2B)	Mini Z8	574752 R	124,51	
	V 18 S (PR-2B)	Mini Z8	574756 R	124,51	
	V 22 S (PR-2B)	Mini Z8	574758 R	124,51	
	V 28 S (PR-2B)	Mini Z8	574760 R	124,51	
	V 35 S (PR-2B)	Mini Z8	574762 R	136,96	
	Viega Sanpress Inox	V 15		578328	146,98
V 18			578332	146,98	
V 22			578334	146,98	
V 28			578336	146,98	
V 35			578604	178,12	
V 15 S (PR-2B)		Mini Z8	574752 R	124,51	
V 18 S (PR-2B)		Mini Z8	574756 R	124,51	
V 22 S (PR-2B)		Mini Z8	574758 R	124,51	
V 28 S (PR-2B)		Mini Z8	574760 R	124,51	
V 35 S (PR-2B)		Mini Z8	574762 R	136,96	
Viega Sanpress Inox G		V 15		578328	146,98
		V 18		578332	146,98
		V 22		578334	146,98
	V 28		578336	146,98	
	V 35		578604	178,12	
	V 15 S (PR-2B)	Mini Z8	574752 R	124,51	
	V 18 S (PR-2B)	Mini Z8	574756 R	124,51	
Viega Smartpress	V 22 S (PR-2B)	Mini Z8	574758 R	124,51	
	V 28 S (PR-2B)	Mini Z8	574760 R	124,51	
	V 35 S (PR-2B)	Mini Z8	574762 R	136,96	
	VX 16		578552	204,17	
	VX 20		578554	204,17	
	VX 25		578556	204,17	
	Viega Temponox	V 15		578328	146,98
V 18			578332	146,98	
V 22			578334	146,98	
V 28			578336	146,98	
V 35			578604	178,12	
V 15 S (PR-2B)		Mini Z8	574752 R	124,51	
V 18 S (PR-2B)		Mini Z8	574756 R	124,51	
V 22 S (PR-2B)		Mini Z8	574758 R	124,51	
V 28 S (PR-2B)		Mini Z8	574760 R	124,51	
V 35 S (PR-2B)		Mini Z8	574762 R	136,96	

System	Pressing tongs Mini/pressing rings	Drive with adapter tongs	Art.-No.	€
Viessmann	TH 14		578348	177,08
	TH 16		578352 R	177,08
	TH 20		578358 R	177,08
	TH 26		578362 R	177,08
	TH 32		578364	177,08
Vogel & Noot	TH 16		578352 R	177,08
	TH 20		578358 R	177,08
EASYTEC	TH 26		578362 R	177,08
	TH 32		578364	177,08
	TH 40		578624	234,69
	TH 16 S (PR-2B)**	Mini Z8	574782 R	124,51
	TH 20 S (PR-2B)**	Mini Z8	574788 R	124,51
VSH	TH 26 S (PR-2B)**	Mini Z8	574794 R	124,51
	TH 32 S (PR-2B)	Mini Z8	574798 R	136,96
	> Aalberts integrated piping systems			

W

Watts MTR	TH 16		578352 R	177,08	
	Art press	TH 20	578358 R	177,08	
	TH 26		578362 R	177,08	
	TH 32		578364	177,08	
WATTS	US ¾"		578534	201,16	
	RADIANT	US ½"	578536	201,16	
Watts WaterPEX	US ¾"		578538	201,16	
	US 1"		578540	201,16	
WATTS	US ¾"		578534	201,16	
	RADIANT	US ½"	578536	201,16	
Watts	US ¾"		578538	201,16	
	RadiantPEX	US 1"	578540	201,16	
WATTS	U 16 (½")		578374	165,66	
	RADIANT	U 20 (¾")	578378	165,66	
Watts	U 25 (¾")		578380	165,66	
	RadiantPEX-AL	U 32 (1")	578382	194,31	
Wavin	B 16		578468	193,28	
	B 20		578472	193,28	
Tigris KS/M5	B 32		578476	213,00	
	H 16		578400	159,75	
	H 20		578406	159,75	
	H 25		578408	159,75	
	H 32		578412	159,75	
	TH 16		578352 R	177,08	
	TH 20		578358 R	177,08	
	TH 25		578360	177,08	
	TH 32		578364	177,08	
	TH 40		578624	234,69	
	TH 16 S (PR-2B)**	Mini Z8	574782 R	124,51	
	TH 20 S (PR-2B)**	Mini Z8	574788 R	124,51	
	TH 25 S (PR-2B)**	Mini Z8	574792 R	124,51	
	TH 32 S (PR-2B)	Mini Z8	574798 R	136,96	
	U 16		578374	165,66	
U 20		578378	165,66		
U 25		578380	165,66		
U 32		578382	194,31		
U 40		578386	236,66		
UP 16		578578	165,66		
UP 20		578582	165,66		
UP 25		578584	165,66		
UP 32		578586	194,31		
WEECON	M 15		578312	146,98	
	PRESS-C-Stahl	M 18	578314	146,98	
	M 22		578316	146,98	
	M 28		578318	146,98	
	M 35		578390	178,12	
	M 15 S (PR-2B)	Mini Z8	574738 R	124,51	
	M 18 S (PR-2B)	Mini Z8	574740 R	124,51	
	M 22 S (PR-2B)	Mini Z8	574742 R	124,51	
	M 28 S (PR-2B)	Mini Z8	574744 R	124,51	
	M 35 S (PR-2B)	Mini Z8	574746 R	136,96	
	WEECON	M 15		578312	146,98
		PRESS-Edelstahl	M 18	578314	146,98
		M 22		578316	146,98
		M 28		578318	146,98
		M 35		578390	178,12
M 15 S (PR-2B)		Mini Z8	574738 R	124,51	
M 18 S (PR-2B)		Mini Z8	574740 R	124,51	
M 22 S (PR-2B)		Mini Z8	574742 R	124,51	
M 28 S (PR-2B)		Mini Z8	574744 R	124,51	
M 35 S (PR-2B)		Mini Z8	574746 R	136,96	
WEECON		V 15		578328	146,98
		PRESS-Kupfer	V 18	578332	146,98
		V 22		578334	146,98
		V 28		578336	146,98
		V 35		578604	178,12
	V 15 S (PR-2B)	Mini Z8	574752 R	124,51	
	V 18 S (PR-2B)	Mini Z8	574756 R	124,51	
	V 22 S (PR-2B)	Mini Z8	574758 R	124,51	
	V 28 S (PR-2B)	Mini Z8	574760 R	124,51	
	V 35 S (PR-2B)	Mini Z8	574762 R	136,96	

System	Pressing tongs Mini/pressing rings	Drive with adapter tongs	Art.-No.	€
Van Marcke NV SYSTEMPEX	TH 16		578352 R	177,08
	TH 20		578358 R	177,08
	TH 26		578362 R	177,08
	TH 32		578364	177,08
	TH 40		578624	234,69
	TH 16 S (PR-2B)**	Mini Z8	574782 R	124,51
	TH 20 S (PR-2B)**	Mini Z8	574788 R	124,51
	TH 26 S (PR-2B)**	Mini Z8	574794 R	124,51
	TH 32 S (PR-2B)	Mini Z8	574798 R	136,96
	Van Marcke NV Tubipress	M 12		578310
M 15			578312	146,98
M 18			578314	146,98
M 22			578316	146,98
M 28			578318	146,98
M 35			578390	178,12
M 12 S (PR-2B)		Mini Z8	574736 R	124,51
M 15 S (PR-2B)		Mini Z8	574738 R	124,51
M 18 S (PR-2B)		Mini Z8	574740 R	124,51
M 22 S (PR-2B)		Mini Z8	574742 R	124,51
M 28 S (PR-2B)		Mini Z8	574744 R	124,51
M 35 S (PR-2B)		Mini Z8	574746 R	136,96
Variotherm System TH		TH 11,6		578344
	TH 16		578352 R	177,08
	TH 20		578358 R	177,08
	TH 16 S (PR-2B)**	Mini Z8	574782 R	124,51
	TH 20 S (PR-2B)**	Mini Z8	574788 R	124,51
VESBO CARBON	M 15		578312	146,98
	M 18		578314	146,98
	M 22		578316	146,98
	M 28		578318	146,98
	M 35		578390	178,12
	M 15 S (PR-2B)	Mini Z8	574738 R	124,51
	M 18 S (PR-2B)	Mini Z8	574740 R	124,51
	M 22 S (PR-2B)	Mini Z8	574742 R	124,51
	M 28 S (PR-2B)	Mini Z8	574744 R	124,51
	M 35 S (PR-2B)	Mini Z8	574746 R	136,96
VESBO INOX	M 15		578312	146,98
	M 18		578314	146,98
	M 22		578316	146,98
	M 28		578318	146,98
	M 35		578390	178,12
	M 15 S (PR-2B)	Mini Z8	574738 R	124,51
	M 18 S (PR-2B)	Mini Z8	574740 R	124,51
	M 22 S (PR-2B)	Mini Z8	574742 R	124,51
	M 28 S (PR-2B)	Mini Z8	574744 R	124,51
	M 35 S (PR-2B)	Mini Z8	574746 R	136,96
VESBO MULTIPRESS TH-U	TH 16		578352 R	177,08
	TH 20		578358 R	177,08
	TH 26		578362 R	177,08
	TH 32		578364	177,08
	TH 16 S (PR-2B)**	Mini Z8	574782 R	124,51
	TH 20 S (PR-2B)**	Mini Z8	574788 R	124,51
	TH 26 S (PR-2B)**	Mini Z8	574794 R	124,51
	TH 32 S (PR-2B)	Mini Z8	574798 R	136,96
	U 16		578374	165,66
	U 20		578378	165,66
	U 26 ⁷⁾		578392	194,31
	U 32		578382	194,31
	VESBO VPREMIUM	U 16		578374
U 20			578378	165,66
U 25			578380	165,66
U 32			578382	194,31
U 40			578386	236,66
Viega Fonterra	VX 12		578550	204,17
	VP 14/15		578480	176,56
	VP 16/17		578482	176,56
	VP 20		578484	176,56
	VP 25		578486	176,56
Viega MegaPress (ASTM) ⁹⁾	VMP ½" G (OD 21,3 mm)		578666 R	204,17
	VMPz ¾" (OD 26,9 mm)		578664	204,17
Viega MegaPress 304 FKM (ASTM) ⁹⁾	VMP ½" G (OD 21,3 mm)		578666 R	204,17
	VMPz ¾" (OD 26,9 mm)		578664	204,17
Viega MegaPress 316 (ASTM) ⁹⁾	VMP ½" G (OD 21,3 mm)		578666 R	204,17
	VMPz ¾" (OD 26,9 mm)		578664	204,17

System	Pressing tongs Mini/pressing rings	Drive with adapter tongs	Art.-No.	€	
Viega MegaPress 316 FKM (ASTM) ⁹⁾	VMP ½" G (OD 21,3 mm)		578666 R	204,17	
	VMPz ¾" (OD 26,9 mm)		578664	204,17	
Viega MegaPress CuNi (ASTM) ⁹⁾	VMP ½" G (OD 21,3 mm)		578666 R	204,17	
	VMPz ¾" (OD 26,9 mm)		578664	204,17	
Viega MegaPress FKM (ASTM) ⁹⁾	VMP ½" G (OD 21,3 mm)		578666 R	204,17	
	VMPz ¾" (OD 26,9 mm)		578664	204,17	
Viega MegaPresG (ASTM) ⁹⁾	VMP ½" G (OD 21,3 mm)		578666 R	204,17	
	VMPz ¾" (OD 26,9 mm)		578664	204,17	
Viega Megapress (EN) ⁴⁾	VMP ¾" (OD 17,2 mm)		578660	204,17	
	VMP ½" G (OD 21,3 mm)		578666 R	204,17	
Viega MegapressS (EN) ⁴⁾	VMPz ¾" (OD 26,9 mm)		578664	204,17	
	VMP ½" G (OD 21,3 mm)		578666 R	204,17	
Viega Pexfit	VX 16		578552	204,17	
	VX 20		578554	204,17	
	VX 25		578556	204,17	
Viega Pexfit G	VX 16		578552	204,17	
	VX 20		578554	204,17	
	VX 25		578556	204,17	
Viega Prestabo	V 12		578324	146,98	
	V 15		578328	146,98	
	V 18		578332	146,98	
	V 22		578334	146,98	
	V 28		578336	146,98	
	V 12 S (PR-2B)	Mini Z8	574748 R	124,51	
	V 15 S (PR-2B)	Mini Z8	574752 R	124,51	
	V 18 S (PR-2B)	Mini Z8	574756 R	124,51	
	V 22 S (PR-2B)	Mini Z8	574758 R	124,51	
	V 28 S (PR-2B)	Mini Z8	574760 R	124,51	
	Viega Profipress	V 12		578324	146,98
		VG 14		578338	146,98
		V 15		578328	146,98
		VG 16		578340	146,98
		V 18		578332	146,98
V 22			578334	146,98	
V 28			578336	146,98	
V 35			578604	178,12	
V 12 S (PR-2B)		Mini Z8	574748 R	124,51	
VG 14 S (PR-2B)		Mini Z8	574750 R	124,51	
V 15 S (PR-2B)		Mini Z8	574752 R	124,51	
VG 16 S (PR-2B)		Mini Z8	574754 R	124,51	
V 18 S (PR-2B)		Mini Z8	574756 R	124,51	
V 22 S (PR-2B)		Mini Z8	574758 R	124,51	
V 28 S (PR-2B)		Mini Z8	574760 R	124,51	
V 35 S (PR-2B)	Mini Z8	574762 R	136,96		
Viega Profipress G	V 12		578324	146,98	
	VG 14		578338	146,98	
	V 15		578328	146,98	
	VG 16		578340	146,98	
	V 18		578332	146,98	
	V 22		578334	146,98	
	V 28		578336	146,98	
	V 35		578604	178,12	
	V 12 S (PR-2B)	Mini Z8	574748 R	124,51	
	VG 14 S (PR-2B)	Mini Z8	574750 R	124,51	
	V 15 S (PR-2B)	Mini Z8	574752 R	124,51	
	VG 16 S (PR-2B)	Mini Z8	574754 R	124,51	
	V 18 S (PR-2B)	Mini Z8	574756 R	124,51	
	V 22 S (PR-2B)	Mini Z8	574758 R	124,51	
	V 28 S (PR-2B)	Mini Z8	574760 R	124,51	
V 35 S (PR-2B)	Mini Z8	574762 R	136,96		
Viega Profipress S	V 12		578324	146,98	
	V 15		578328	146,98	
	V 18		578332	146,98	
	V 22		578334	146,98	
	V 28		578336	146,98	
	V 35		578604	178,12	
	V 12 S (PR-2B)	Mini Z8	574748 R	124,51	
	V 15 S (PR-2B)	Mini Z8	574752 R	124,51	
	V 18 S (PR-2B)	Mini Z8	574756 R	124,51	
	V 22 S (PR-2B)	Mini Z8	574758 R	124,51	
	V 28 S (PR-2B)	Mini Z8	574760 R	124,51	
	V 35 S (PR-2B)	Mini Z8	574762 R	136,96	

Pressfitting systems for gas installations may only be pressed with the pressing tongs Mini which are highlighted in yellow in the table.

Observe the national regulations. Read and observe the system provider's/manufacturer's instructions for use and assembly instructions.

** Can also be driven by the ROLLER'S Easy-Press manual radial press using the Z8 adapter tongs, see page 90. Observe the national regulations.

¹⁾ Only pressing tongs from designation "108" (1st quarter of 2008), "208" (2nd quarter of 2008) etc. can be used. The designation is stamped on every pressing jaw.

²⁾ For accommodating suitable pressing inserts.

³⁾ Only pressing tongs from designation "117" (1st quarter of 201), "217" (2nd quarter of 2017) etc. can be used. The designation is stamped on every pressing jaw.

⁴⁾ For pipes with the EN technical standard. Observe the system provider's/manufacturer's instructions for use.

⁵⁾ Only use Mini pressing tongs identified by "VMP ½" G" on the pressing jaws for gas installations.

⁷⁾ Previous designation: Mini C 26 pressing tongs

⁹⁾ For pipes with the ASTM technical standard. Observe the system provider's/manufacturer's instructions for use.

Suitability of the ROLLER'S pressing tools for pressfitting systems: Status 27.10.2023. The current status can be found on the Internet:

www.albert-roller.de → Downloads → Product Catalogues, Brochures → ROLLER Catalogue.

See page 79 for adapter tongs. Pressing tongs/pressing rings for other press fitting systems on request.