

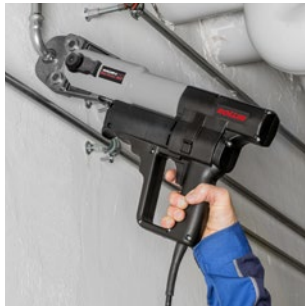
ROLLER'S Uni-Press ACC



Two connections for ROLLER'S manual radial press and ROLLER'S 32 kN radial presses

←ACC→
Automatic Circuit Control
with forced return

German Top Quality



Robust, compact electric radial press 32 kN with automatic return (forced return). For radial press joints Ø 10–108 (110) mm, Ø 3/8–4"

- Universal for all ROLLER'S pressing tongs (except ROLLER'S pressing tongs Mini) and ROLLER'S pressing rings, as well as for suitable pressing tongs / pressing rings of other makes.
- Compact design, perfect weight distribution for real one-hand operation, comfortable weight, drive unit only 4.7 kg.
- Tiltable pressing tongs (through 360°) by housing on rotary bearing.
- Pressing process in inching mode with ACC – for work safety, functional safety and operating safety. Automatic return (forced return) after completed pressing.
- Several tons feed and pressing force for perfect, split-second pressing. Thrust 32 kN. Robust, powerful, electrohydraulic drive with eccentric piston pump with robust planetary gear and compact high-performance hydraulic system.
- Proven, powerful 1~ universal motor 230 V, 50–60 Hz, 450 W, with safety switch.
- Constant shear force for constantly reliable pressing.
- Secure seating of pressing tongs / adaptor tongs by automatic locking.
- **Complete range of ROLLER'S pressing tongs / pressing rings for all common pressfitting systems, see page 100–140.**

With precisely worked and exactly rounded, system-specific press contour according to the respective pressfitting system. For perfect system-conformant, reliable pressing.

The pressing tongs / pressing rings are made from tenacious, specially hardened special steel and they are therefore highly resistant. For maximum quality demands and long life.

ROLLER'S pressing tongs/pressing rings fit all ROLLER'S 32 kN radial presses and suitable drive units of other makes with 32 kN thrust.

All pressing tongs marked by a * have an additional connection for manual driving by the ROLLER'S Easy-Press drive unit.

All pressing rings S (PR-2B) marked with ** can also be driven with the manual radial press ROLLER'S Easy-Press using the adaptor tong Z8, see page 140.

- Confirmations of suitability see page 52.
- Liability acceptance agreements see page 53.

Scope of Delivery	Art.-No.	Kč
-------------------	----------	----

ROLLER'S Uni-Press ACC Basic-Pack

32 kN drive unit with forced return.

Basic-Pack in steel case	577010 A220	42 270,00
Basic-Pack in L-Boxx system case	577013 A220	43 470,00

Accessories

ROLLER'S pressing tongs / pressing rings	See page 100–140	
Adaptor tongs for ROLLER'S pressing rings	See page 140	
ROLLER'S Uni-Press ACC drive unit with forced return	577000 A220	39 270,00
ROLLER'S cropping tongs M for threaded bars	See page 142	
ROLLER'S cable shears for electric cables	See page 142	
Steel case with inlay	570280 A	3 190,00
L-Boxx system case with inlay	571283 A	4 240,00