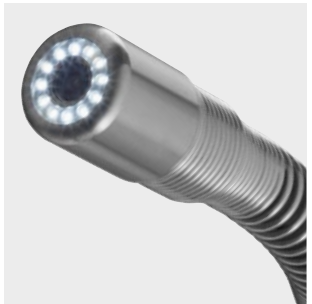
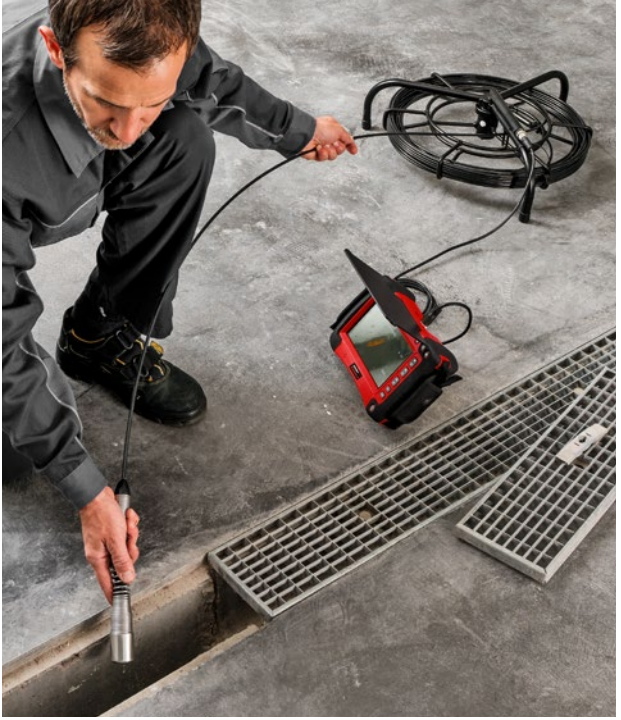


ROLLER'S VisioCam 2



Very compact, lightweight, electronic camera inspection system for brilliant pictures and videos of pipes and drains Ø 40– 150 mm, chimneys and other hollow cavities. Self-levelling camera. Transmitter for locating the camera. With electronic metering. For documentation of pictures and videos with voice recording on SD card. For cordless and mains operation.

- For inexpensive inspection and damage analysis of pipes, drains, chimneys and other hollow cavities. Also for inspection after pipe cleaning work and for acceptance of new installations or repairs.
- Only one extra light, extra handy controller unit with TFT-LCD colour display for connecting different camera cable sets for different requirements. Can be used anywhere, even in very narrow places.
- Controller unit connected to the camera cable set by a 2 m connecting cable, removable for easy cleaning of the camera cable set. Plug-screw connections for changing the camera cable sets and the controller unit without tools.
- Sturdy case for controller unit, voltage supply/charger and accessories.
- **Controller unit with large 7" colour display**
Controller unit with large 7" colour display with state of the art TFT-LCD- technology for brilliant pictures and videos, 178 mm screen diagonal, 720 × 480 pixels. Very light and handy, only 1.3 kg. Sturdy, impact-proof plastic housing, spray protected. Glare protection. Integrated stand for different angles of inclination of the screen. Ergonomic softgrip handles and adjustable clamping straps, keys for picture and video, for one-hand operation. Small dimensions: 270 × 164 × 70 mm. Keys for setting the brightness of the LEDs of the colour camera head. Full screen, 2x zoom, 4-fold rotation of the picture. Automatic switch-off can be set. SD card slot. Pictures and videos with voice recording can be saved on an SD card for simple documentation of the inspection result. Insertion depth of the camera is saved in the picture and video, optionally with date and time of the recording. Pictures can be taken during video recording without impairing the video recording. Immediate playback of saved recordings or transmission to other devices with SD card. Pictures can also be taken later from the video during playback of recorded videos on the controller's colour display. USB connector for direct connection to PC or laptop. Video output socket Composite-Video PAL/NTSC for connecting an external monitor. Connection for voltage supply/charger 100 – 240 V.
- **For cordless and mains operation**
Li-Polymer Technology. Controller unit with integrated Li-Polymer battery 3.7 V, 7.6 Ah. Powerful and light. Power supply/charger 100–240 V, 50–60 Hz, 15 W, with USB port and USB cable for connecting power supply/charger, laptop or other voltage supply. No memory effect for maximum battery performance.
- **High-resolution colour camera**
with CMOS image sensor and ultra bright, white LEDs with adjustable light intensity up to 1,700 mcd and concentrated radiation angle for brilliant colour pictures with evenly bright illumination. Low light requirement due to very high light sensitivity (0.1 lux). Fixed focus and special lens with 90° wide angle, also for detecting the smallest details.
- **Interchangeable camera cable sets**
consisting of high-resolution special colour camera. very small, rounded camera head, water-tight up to 20 m (2 bar/0.2 MPa/29 psi) and highly flexible sliding spring tapered towards the push cable for effortless feeding even through several pipe bends. Camera head with strong, interchangeable protective cap with insert-ed mineral glass pane. Bend-manoeuvrng push cable in hybrid technology, with glass fibre core, data cables and plastic sheath, very stable, for long life. Connection for controller unit. Robust, powder-coated, easy to clean cable reel.
Camera cable set S-Color 10 K
for small pipe diameters and narrow pipe bends Ø (40) 50– 150 mm. Consisting of high-resolution special colour camera Ø 25 mm with 10 m push cable Ø 4.5 mm with length marking, very flexible, in cable reel.
Camera cable set S-Color 20 K
for small pipe diameters and narrow pipe bends Ø (40) 50– 150 mm. Consisting of high-resolution special colour camera Ø 25 mm with 20 m push cable Ø 4.5 mm with length marking, very flexible, in the hasp with electronic metering. Hasp with rotary cage for simple unwinding and winding of the push cable and integrated sensor for electronic metering.
Camera cable set S-Color S 30 H
for pipes Ø 50– 150 mm. Consisting of high-resolution special colour camera Ø 25 mm with 30 m push cable Ø 5.4 mm, flexible, in the hasp with electronic metering. 33 kHz transmitter for tracking the camera head, enables exact localisation of damaged areas. Hasp with rotary cage for simple unwinding and winding of the push cable and integrated sensor for electronic metering.
Camera cable set S-H 30 H
for pipes Ø 70– 150 mm. Consisting of high-resolution special colour camera Ø 33 mm, self-levelling for upright pictures and videos for good orientation in the pipe, with 30 m push cable Ø 5.4 mm, flexible, in the hasp with electronic metering. 33 kHz transmitter for tracking the camera, enables exact localisation of damaged areas. Hasp with rotary cage for simple unwinding and winding of the push cable and integrated sensor for electronic metering.
- Camera cable set carrying case (accessory).
- Guide body (accessory) firmly lockable on the camera head in different sizes, for large pipe diameters.
- **ROLLER'S Detector** for tracking a camera head with a 33 kHz transmitter, for determining the position of damaged areas or the course of the pipe (accessory).

ROLLER'S VisioCam 2 set

Controller unit with large 7" TFT-LCD colour display, SD card slot, USB port, video output socket PAL/NTSC, integrated Li-Polymer 3.7 V, 7.6 Ah battery, glare protection, stand, 2 m connecting cable from the controller unit to the camera cable set, supply voltage/charger 100–240 V, 50–60 Hz, 15 W, SD card 4 GB, USB cable, in sturdy case. With camera cable set S-Color with high-resolution special colour camera and push cable.

Set S-Color 10 K

With camera cable set S-Color 10 K with high-resolution special colour camera Ø 25 mm, 10 m push cable Ø 4.5 mm, with length marking, very flexible, in cable reel. For small pipe diameters and narrow pipe bends Ø (40) 50–150 mm

175301 A220 **3.051,72**

Set S-Color 20 H

With camera cable set S-Color 20 H with high-resolution special colour camera Ø 25 mm, 20 m push cable Ø 4.5 mm, very flexible, in the hasp with electronic metering. For small pipe diameters and narrow pipe bends Ø (40) 50–150 mm

175302 A220 **4.017,06**

Set S-Color S 30 H

With camera cable set S-Color 30 H with high-resolution special colour camera Ø 25 mm, 33 kHz transmitter for tracking the camera head, 30 m push cable Ø 5.4 mm, in the hasp with electronic metering. For pipes Ø 50 – 150 mm,

175303 A220 **4.224,66**

Set S-Color S-N 30 H

With camera cable set S-Color 30 H with high-resolution special colour camera Ø 33 mm, self-levelling, 33 kHz transmitter for tracking the camera head, 30 m push cable Ø 5.4 mm, in the hasp with electronic metering. For pipes Ø 70 – 150 mm,

175304 A220 **4.587,96**

Accessories

ROLLER'S VisioCam 2 Basic-Pack

Controller unit with large 7" TFT-LCD colour display, SD card slot, USB port, video output socket PAL/NTSC, integrated Li-Polymer 3.7 V, 7.6 Ah battery, glare protection, stand, 2 m connecting cable from the controller unit to the camera cable set, supply voltage/charger 100–240 V, 50–60 Hz, 15 W, SD card 4 GB, USB cable, video cable, in sturdy case.

175300 A220 1.961,82

Camera cable set S-Color 10 K

with high-resolution special colour camera Ø 25 mm, 10 m push cable Ø 4.5 mm with length marking, very flexible, in cable reel. For small pipe diameters and narrow pipe bends Ø (40) 50–150 mm

175305 R 1.089,90

Camera cable set S-Color 20 H

with high-resolution special colour camera Ø 25 mm, 20 m push cable Ø 4.5 mm, very flexible, in the hasp with electronic metering. For small pipe diameters and narrow pipe bends Ø (40) 50–150 mm

175306 A 2.055,24

Camera cable set S-Color S 30 H

With high-resolution special colour camera Ø 25 mm, 33 kHz transmitter for tracking the camera, 30 m push cable Ø 5.4 mm, in the hasp with electronic metering. For pipes Ø 50 – 150 mm

175307 A 2.262,84

Camera cable set S-Color S-N 30 H

with high-resolution special colour camera Ø 33 mm, self-levelling 33 kHz transmitter for tracking the camera, 30 m push cable Ø 5.4 mm, in the hasp with electronic metering. For pipes Ø 70 – 150 mm

175308 A 2.626,14

Protective cap S-Color / S-Color S

with mineral glass pane, sealing ring, for camera cable set S-Color / S-Color S

175026 R 36,33

Protective cap S-Color S-N

with mineral glass pane, sealing ring, for camera cable set S-Color S-N

175330 R 86,05

Guide body Ø 62 mm S-Color / S-Color S

for camera cable set S-Color / S-Color S

175057 R 107,33

Guide body Ø 100 mm S-Color / S-Color S

for camera cable set S-Color / S-Color S

175058 R 124,35

Guide body Ø 62 mm S-Color S-N

for camera cable set S-Color S-N

175343 R 59,48

Guide body Ø 100 mm S-Color S-N

for camera cable S-Color S-N

175339 R 83,46

ROLLER'S Detector

Tracking device for tracking a camera head with a 33 kHz transmitter

175312 A 1.987,77

Case with inlay

175323 A 98,61

Camera cable set carrying case

175123 A 128,71

