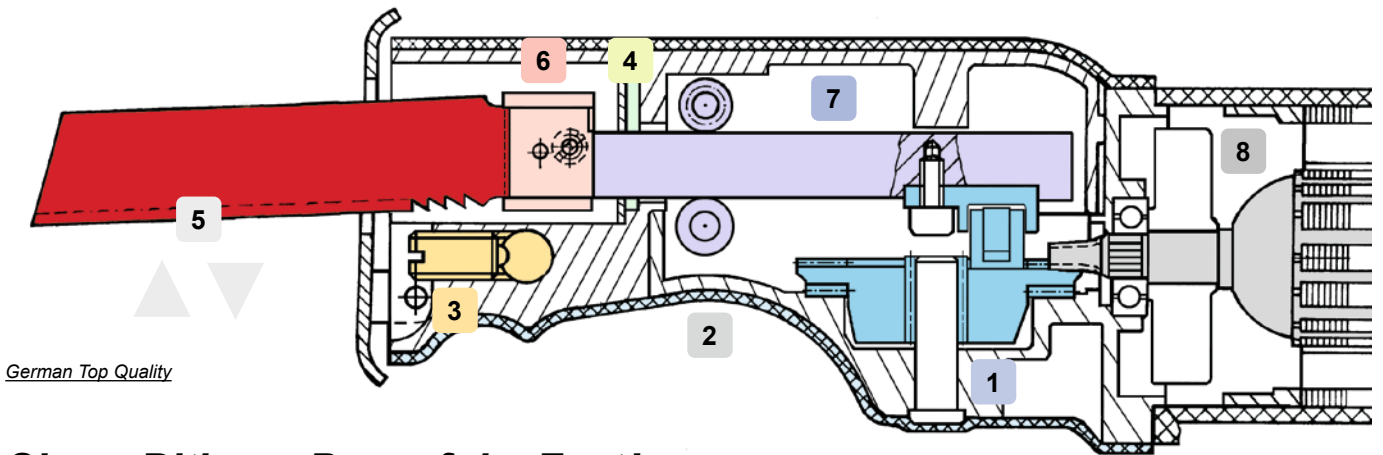


# ROLLER'S *reciprocating saws*

Legend

Electric reciprocating saws / cordless reciprocating saws Ø 6", 250 mm



German Top Quality

## Sharp Biting – Powerful – Fast!

- 1

ANC

Very robust oscillator drive creates simultaneous sawing and orbital stroke. All-round needle-bearing crank drive (ANC) reduces friction, heating and wear. Therefore long life even under extreme load.

2

ANC

Powerful saw feed when sawing free hand due to ergonomically designed housing handle and non-slip, heat-insulated, soft grip protective sheath.

3

3

Guide holder with 5-fold force transmitting leverage for 400 % more sawing power for fast, effortless, right-angled sawing. Applicable everywhere on site, without a vice. Easy and safe to operate. Ideal for assembly and disassembly.

4

4

Gear protected against water and dust by special, high-sliding silicone seal.

5

5

Aggressive orbital stroke for fast, powerful saw feed, excellent chip discharge and long life of saw blades. Fixed setting, precision needle bearing for continuously powerful sawing performance. Specially developed for extreme loads, e.g. for sawing steel pipe.

6

6

Universal saw blade holder. All saw blades – with one-sided and two-sided hinge – can be clamped without changing or without moving the saw blade pressure piece.

7

7

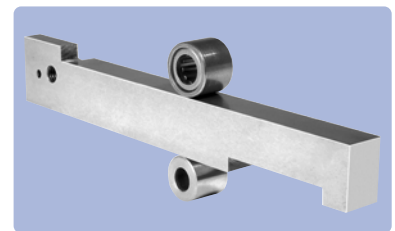
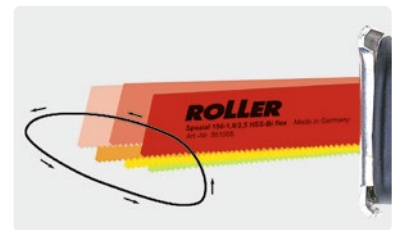
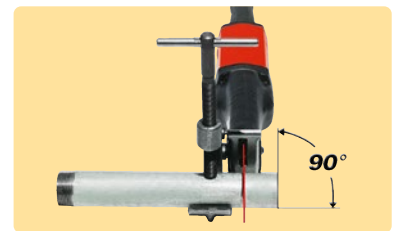
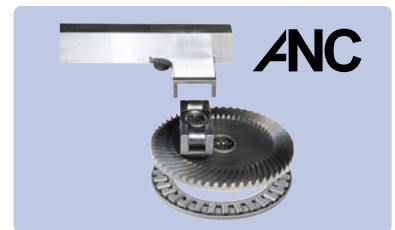
Stable, right-angled, solid lifting rod of special steel, precision needle bearing, guide all sides for straight, torsion-free cutting. Especially under extreme load, e.g. when using a force-transmitting guide holder.

8

8

Proven, powerful drive motors 230 V, 110 V or 21.6 V with large power reserves and very high efficiency.





**n ideal**

**Ideal stroke speed!**

Purposely fixed stroke speed (2,400 rpm). No electronics! Thus automatically optimal cutting speed and least possible wear on saw blade, motor and gear.

**VE**

**Vario-Electronic!**

Continuously adjustable number of strokes for simple sawing start and material-compatible free hand sawing. The number of strokes is continuously controlled (accelerator switch) by variable pressure on the safety switch 0 to 2,400 rpm (ROLLER'S Carat VE, ROLLER'S Fox VE), 0 to 1,900 rpm (ROLLER'S Carat 22V VE, ROLLER'S Fox 22V VE).

**SR**

**Speed-Regulation!**

Stroke speed continuously adjustable at the thumbwheel (700 to 2,200 rpm). The preselected stroke speed remains constant even under extreme load. With soft start, speed generator, temperature monitoring and locking protection. For material-compatible sawing. Ideal for stainless steel pipes, cast pipes and for sawing boilers, tanks, etc.

**kg**

**Weight**

High sawing performance at low weight by innovative, mature technology and perfect matching of all parts. For effortless sawing without fatigue and extremely easy handling.

**W**

**Power**

The respective specified power is the consumed power. The drive motors of the ROLLER'S reciprocating saws have very high efficiency thanks to excellent technology and quality. The user therefore gets high output powers which he can use to his advantage especially for sawing difficult to cut materials, e.g. steel pipes.

**V**

**Drive motors**

Universal motors for mains voltages 230 V, 110 V or battery motors 21.6 V are used depending on the model. All drive motors are extremely powerful, meet the highest quality demands and have great power reserves for long life.