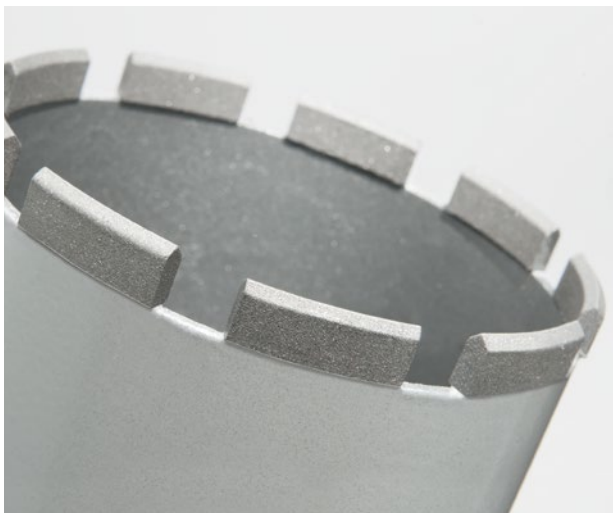
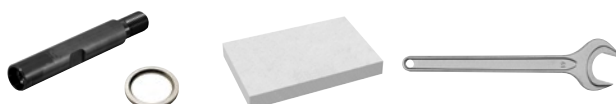


# ROLLER'S Universal diamond core drilling crowns LS



-  ▶ Steel reinforced concrete (wet)
-  ▶ Brickwork (wet)
-  ▶ Lime sandstone (dry / wet)
-  ▶ Poroton (dry / wet)
-  ▶ Sandstone (wet)
-  ▶ Asphalt (wet)
-  ▶ Granite (wet) and many more



Accessory for ROLLER'S Centro S1, Centro SR, Centro S3, Centro S2 / 3.5 and other makes.

**High temperature, universal diamond core drilling crowns, laser-welded, universally applicable for dry and wet drilling, hand held or with drill stands. For many materials, e.g. concrete, steel-reinforced concrete, masonry of all kinds, natural stone, asphalt, screeds of all kinds. Connecting thread UNC 1¼ female, drilling depth 420 mm.**

- Driven by ROLLER'S Centro S and by suitable drive units of other makes with UNC 1¼ female connection thread. Adapter for connecting to drive unit with other connecting threads/other tool holders (accessory).
- Diamond segments with wedge-shaped cut ("roof shape") for fast, easy and quiet drilling start.
- Laser-welded on fully automatic welding machines for consistent high quality of the weld High temperature-resistant, even under extreme temperature load, no desoldering of the segments due to overheating.
- High quality diamond segments with special bonding with high diamond content for fast drilling and very long life. Universal for use in steel reinforced concrete, granite, lime sandstone, Poroton, brick, asphalt.
- Immediately ready for use by sharpened diamond segments.
- Easy loosening ring, for easy loosening of the drilling crown (accessory).
- Use ROLLER'S Protector 2 M for high-performance extraction of the drilling dusts from the drilling gap during dry drilling, see page 207. ROLLER'S Protector 2 M dry and wet extractor is certified for the extraction of health hazardous dusts of dust class M.

| Designation<br>Ø × drilling depth × connection | Number<br>of segments | Art.-No. | € |
|--|-----------------------|----------|---|
|--|-----------------------|----------|---|

### ROLLER'S Universal diamond core drilling crowns LS

|                            |    |          |        |
|----------------------------|----|----------|--------|
| UDKB LS 32 × 420 × UNC 1¼  | 1  | 181410 A | 157,72 |
| UDKB LS 42 × 420 × UNC 1¼  | 4  | 181415 A | 147,34 |
| UDKB LS 52 × 420 × UNC 1¼  | 5  | 181420 A | 156,69 |
| UDKB LS 62 × 420 × UNC 1¼  | 6  | 181425 A | 170,18 |
| UDKB LS 72 × 420 × UNC 1¼  | 6  | 181430 A | 193,02 |
| UDKB LS 82 × 420 × UNC 1¼  | 7  | 181435 A | 209,62 |
| UDKB LS 92 × 420 × UNC 1¼  | 8  | 181440 A | 236,61 |
| UDKB LS 102 × 420 × UNC 1¼ | 9  | 181445 A | 242,84 |
| UDKB LS 112 × 420 × UNC 1¼ | 9  | 181450 A | 256,33 |
| UDKB LS 122 × 420 × UNC 1¼ | 10 | 181455 A | 289,55 |
| UDKB LS 127 × 420 × UNC 1¼ | 10 | 181459 A | 300,97 |
| UDKB LS 132 × 420 × UNC 1¼ | 10 | 181460 A | 313,42 |
| UDKB LS 152 × 420 × UNC 1¼ | 11 | 181465 A | 372,59 |
| UDKB LS 162 × 420 × UNC 1¼ | 12 | 181470 A | 394,39 |
| UDKB LS 182 × 420 × UNC 1¼ | 13 | 181475 A | 476,39 |
| UDKB LS 200 × 420 × UNC 1¼ | 14 | 181480 A | 503,38 |

### Accessories

|  |            |        |
|--|------------|--------|
| Adapter UNC 1¼ male to G ½ female  | 180052     | 31,45  |
| Adapter UNC 1¼ male to G ½ male  | 180056     | 28,55  |
| Adapter UNC 1¼ male for Hilti BI<br>adapter for using the ROLLER'S universal<br>diamond core drilling crowns in Hilti drive machines<br>with BI tool holder. | 180053     | 48,27  |
| Adapter UNC 1¼ male for Hilti BU<br>adapter for using the ROLLER'S universal<br>diamond core drilling crowns in Hilti drive machines<br>with BU tool holder. | 180054     | 111,07 |
| Adapter UNC 1¼ male for Hilti BL<br>adapter for using the ROLLER'S universal<br>diamond core drilling crowns in Hilti drive machines<br>with BL tool holder. | 180057 R   | 111,07 |
| Other adapters for using ROLLER'S universal<br>diamond core drilling crowns in drive units<br>of other makes   | on request |        |
| Drilling crown extension 200 mm  | 180155 R   | 61,19  |
| Easy loosening ring for easy loosening<br>of the diamond core drilling crown   | 180015     | 20,66  |
| Sharpening stone for diamond core drilling crowns  | 079012     | 64,67  |
| Single open ended wrench SW 41<br>for loosening of the drilling crown  | 079003     | 38,35  |