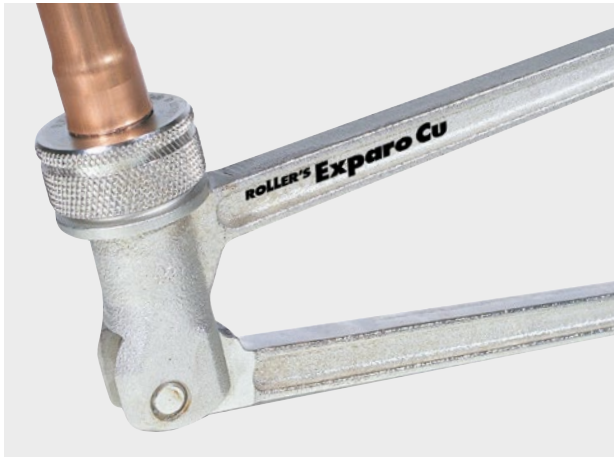


## ROLLER'S *Exparo Cu*



German Top Quality



**Robust, stable manual tube expander for soft copper tubes Ø 8–42 mm, Ø 3/8–1 1/8", wall thickness up to 1.5 mm, soft aluminium and precision steel tubes Ø 8–42 mm, wall thickness up to 1.2 mm, soft, stainless steel tubes Ø 8–42 mm, wall thickness up to 1 mm.**

- No costs for fittings, storage, procurement. Saving on solder points.
- Torsion-free, force transmitting expanding tongs for easy expanding.
- Hexagonal expanding mandrel for even centric expanding.
- Expander head with long, stable formers for perfect tube connection according to DVGW. Add-on for calibrating tube ends.

Scope of Delivery

Art.-No.

kr

### ROLLER'S *Exparo Cu* set

Expanding tongs Cu, ROLLER'S expanding heads Cu, in steel case.

<b>Set 12+15+18+22</b>	150000 A	<b>5 780,00</b>
<b>Set 15+18+22+28</b>	150006 A	<b>5 970,00</b>
<b>Set 12+14+16+18+22</b>	150010 A	<b>6 670,00</b>

Other sets available on request.

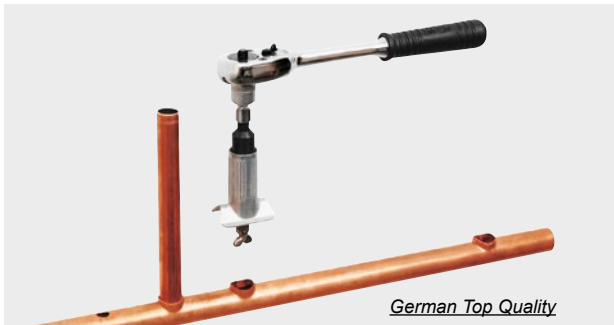
Accessories

**ROLLER'S expander heads Cu (also fit in ROLLER'S Exparo Cu 22V ACC and suitable expanding tongs of other makes)**

Ø 8 mm	150100 A	800,00
Ø 10 mm	150105 A	800,00
Ø 12 mm	150110 A	800,00
Ø 14 mm	150120 A	800,00
Ø 15 mm	150125 A	800,00
Ø 16 mm	150130 A	800,00
Ø 18 mm	150140 A	800,00
Ø 20 mm	150145 A	1 120,00
Ø 22 mm	150150 A	800,00
Ø 24 mm	150155 A	1 280,00
Ø 25 mm	150160 A	1 120,00
Ø 26 mm	150165 A	960,00
Ø 28 mm	150170 A	960,00
Ø 30 mm	150175 A	1 280,00
Ø 32 mm	150180 A	960,00
Ø 34 mm	150185 A	1 280,00
Ø 35 mm	150190 A	1 280,00
Ø 36 mm	150195 A	1 280,00
Ø 40 mm	150205 A	1 280,00
Ø 42 mm	150210 A	1 120,00
Ø 3/8"	150220 R	800,00
Ø 1/2"	150225 R	800,00
Ø 5/8"	150230 R	800,00
Ø 3/4"	150235 R	960,00
Ø 7/8"	150240 R	960,00
Ø 1"	150245 R	1 120,00
Ø 1 1/8"	150250 R	1 120,00

<b>ROLLER'S expanding tongs Cu</b>	150500 A	2 240,00
<b>Steel case with inlay</b>	150600 A	680,00

## ROLLER'S *Rotaro H*



German Top Quality

**Robust, stable tube neck expander for copper tubes Ø 10–22 mm, wall thickness up to 1.5 mm.**

- For simple production of T-outlets for tube installation without fittings.
- No costs for fittings, storage, procurement. Saving on solder points.

Scope of Delivery

Art.-No.

kr

### ROLLER'S *Rotaro H* set

Tool holder, drill head, cam tongs, lubricant. Neck expanding tool for tubes Ø mm, in case.

<b>Set 12+15+18+22</b>	151003 A	<b>6 800,00</b>
<b>Set 12+14+16+18+22</b>	151004 A	<b>7 570,00</b>

Accessories

<b>Neck expanding tools</b>	See page 151	
<b>ROLLER'S Rotaro drive unit with stabiliser</b>	151402 A220	4 600,00
<b>Tool holder</b>	151200 A	1 060,00
<b>Drill head</b>	151210 AIN	1 580,00
<b>Cam tongs</b>	151230 R	510,00
<b>Gripping tongs for fixing the tool holder</b>	076117	1 360,00
<b>Ratchet 1/2</b>	074021	950,00
<b>Allen key insert 11</b>	074041	97,00
<b>Lubricant (can)</b>	151240	120,00
<b>Case with inlay</b>	151618 A	670,00

